

Launching of the data call for the AER  
SG-ECA 10-02

Deadline to submit AER data  
SG-ECA 10-02

Deadline to submit fishing effort data  
SG-MOS 10-04 & 10-05

Launching of the 1st data call on Mediterranean  
SG-MED 10-02

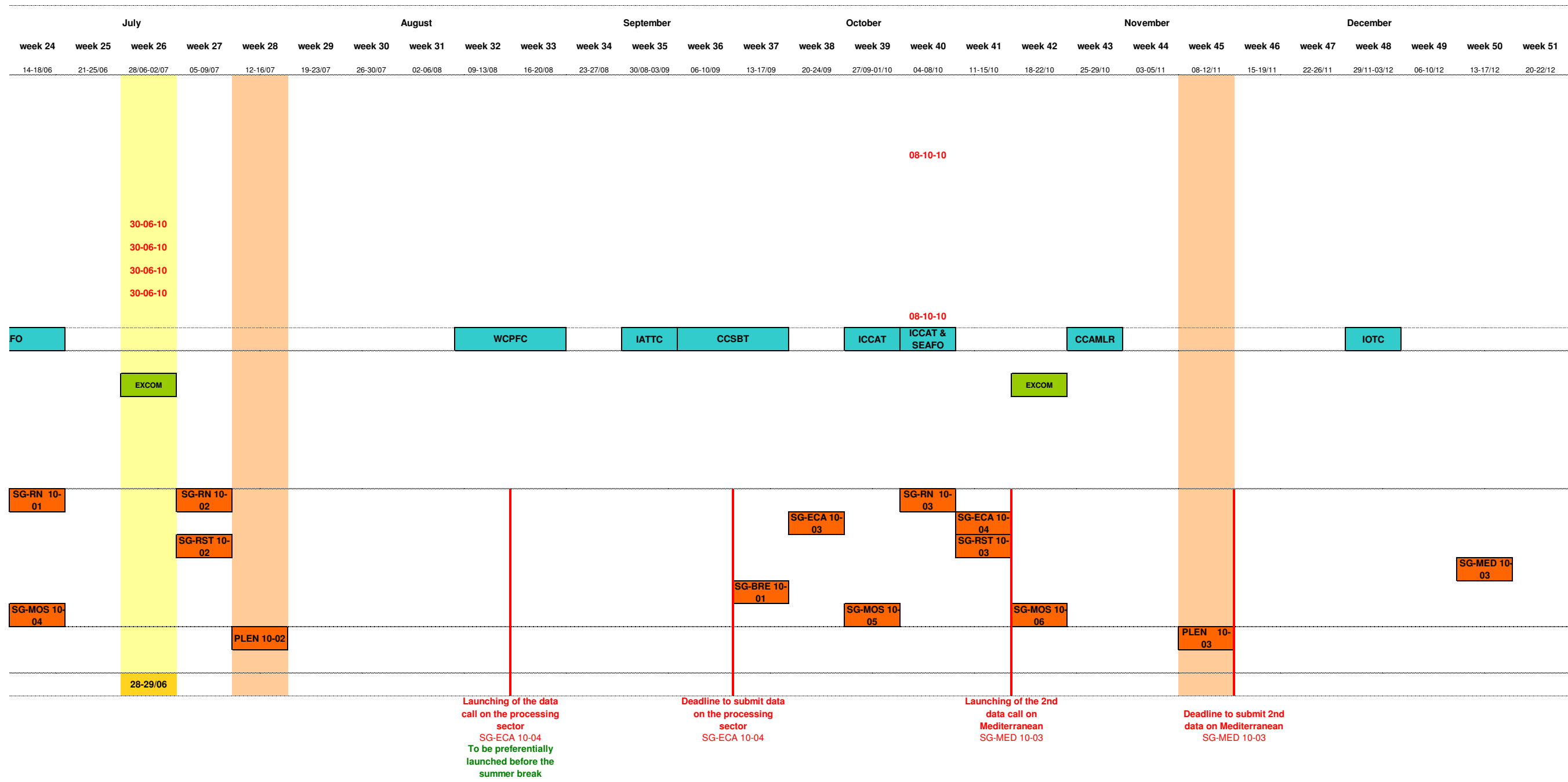
Deadline to submit 1st data on Mediterranean  
SG-MED 10-02

Launching of the data call for fishing effort  
SG-MOS 10-04 & 10-06

**Benchmark meeting WKROUND - 09/02-16/02/2010**  
ACOM 02/03/2010  
Saithe in ICES subareas I & II  
Saithe in ICES division Va  
Saithe in ICES division Vb  
Haddock in ICES subareas I & II  
Hake in ICES division IIIa, subareas IV, VI & VII and divisions VIIIa,b,d  
Hake in ICES divisions VIIIc & IX

**Benchmark meeting WKDEEP - 17/02-24/02/2010**  
ACOM 08/03/2010  
Roundnose grenadier in ICES division Vb and subareas VI & VII  
Greater Silver smelt in all areas  
Tusk in ICES division Va  
Red seabream in ICES subarea X  
Seep-water squaliform sharks in all areas  
Greater forkbeard

**Benchmark meeting WKFLAT - 25/02-04/03/2010**  
ACOM 19/03/2010  
Sole in ICES division IIIa  
Sole in ICES subarea IV  
Plaice in ICES division VIId  
Plaice in ICES division VIle



week 52

27-29/12