

INFORMATION FOR MEETINGS IN IPIMAR and FOR-MAR (Lisboa)

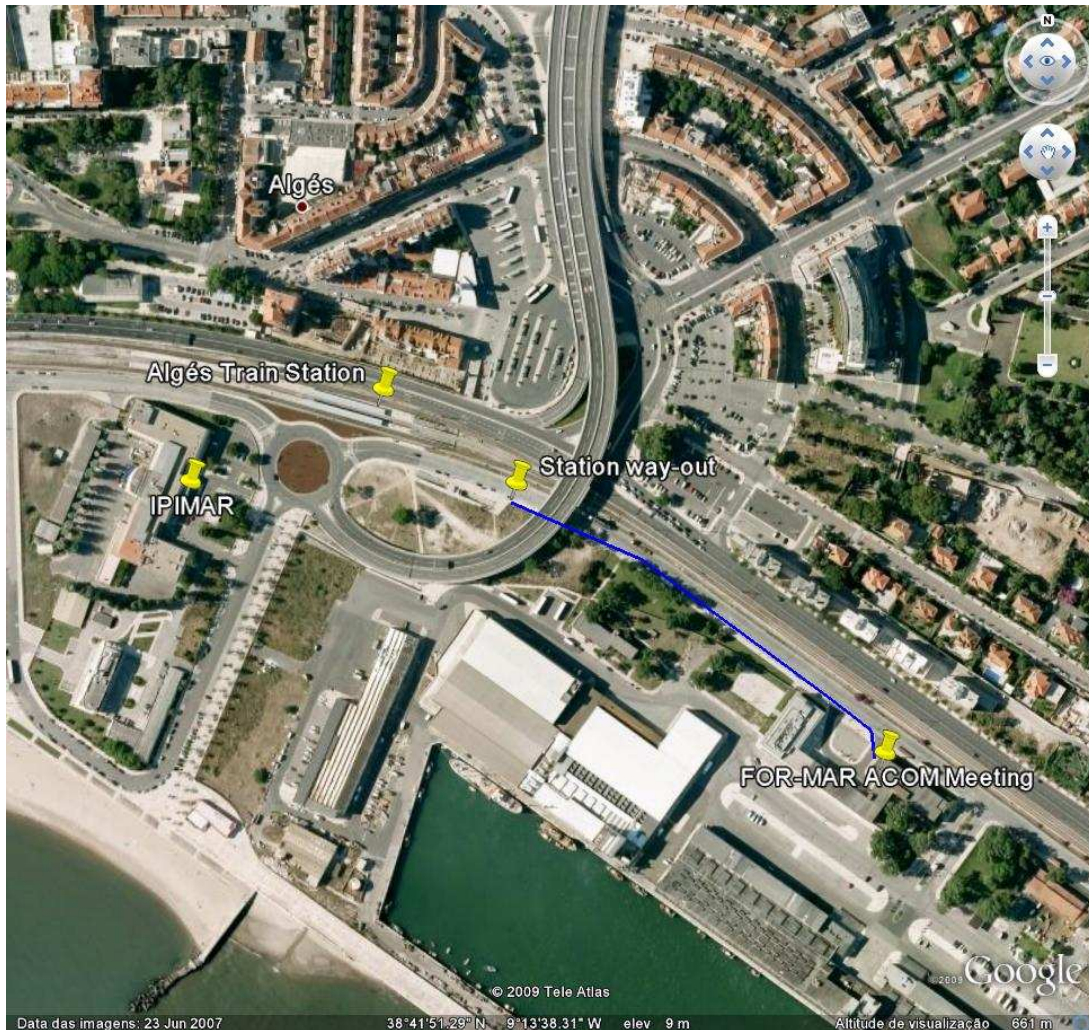
1) Location

IPIMAR-Lisboa is located by the river Tagus in the town of Algés, just outside Lisbon. The full address is:

IPIMAR Lisboa
Avenida de Brasília (Praia de Alges)
1449-006 Lisboa,
Tel. No. +351 21 302 7000
Fax +351 21 301 5948

FOR-MAR

Located close to IPIMAR (~5 min walking).



Map with train and subway connections:



2) Lodging

A nice place to stay in Lisbon is in the areas of “Restauradores”, “Rossio” and “Baixa-Chiado” where you can find several accommodation options. However any Hotel close to the metro stations of the “green line” (map above) may be a good choice for an easy and fast connection to the train station “Cais do Sodré”. Alternative areas in Lisbon are Alcântara and Belém.

Some suggestions are:

Hotel Borges (www.hotelborges.com) – Chiado, down town: located in one of the nicest places in the city, in the heart of the nightlife. From this hotel one takes 5 min. walking to the train station (“Cais do Sodré”) and 15 min. walking from the train station to the hotel (it’s a steep hill). However you may also take the metro and it is a 2 min trip from the train station to the metro station (“Baixa-Chiado”) in front of the door of the hotel.

Hotel do Chiado (www.hoteldochiado.com) – Chiado, down town: located in one of the nicest places in the city, in the heart of the nightlife. From this hotel one takes ~10 min. walking to the train station (“Cais do Sodré”) but one can also take the metro (station “Baixa-Chiado”) very close to the hotel.

Special rates are available for participants (classic 125 €, superior 145 €, premium 165 €) but this requires that booking for the Hotel do Chiado is done directly to the hotel sales manager, Paula Quintas paula.quintas@hoteldochiado.pt indicating that you are participating in a meeting at IPIMAR.

Hotel AS Lisboa (<http://www.hotel-aslisboa.com/en/home/>) Alameda: from this hotel one can take the metro (station “Alameda”), in front of the Hotel to train station (“Cais do Sodré”).

Hotel Vila Galé OPERA (<http://www.vilagale.com/pages/hoteis/?hotel=13>) Alcântara: located close to the Tejo Bridge, 100m from Bus Terminal and 800m from Train Station (“Alcântara-Mar”).

Jerónimos 8 Hotel (<http://www.jeronimos8.com/home.php?lingua=en>) – Belém: in the centre of the major monuments and museums of Lisbon (Discoveries Monument, Belém Cultural Centre, etc.).

It is about 20 min walking to IPIMAR; the train station is “Belém”.

Some suggestions in Cascais and Estoril:

The **Hotel Baía** is at a 10 min. walking distance from the “Cascais” train station. Between Algés and Cascais there are other hotels close to the train station of “Estoril” and “Monte Estoril” (e.g. **Hotel Sana Estoril**, **Hotel Sao Mamede**, **Hotel Estoril_Eden**).

For information on Tourism Lisbon:

<http://www.visitlisboa.com/travelplanner/default.asp?lng=uk>